

# Data Sheet 605.25

## Container screw conveyor SC200 / SC250



### Design

The Cimbría container screw conveyors are used for levelling grain, manure, flour, powder products, granulates, ashes, slag and a number of waste products.

The construction is with self supporting screw conveyor shafts without bearings up to a length of 6 m., which makes the screw conveyor suitable for building in silos and containers.



The screw conveyor can be delivered in 3 models:

**L** ..... For slightly wearing materials

As standard the screw shaft is mounted with the outer FY 35 flange bearing directly on the container wall.

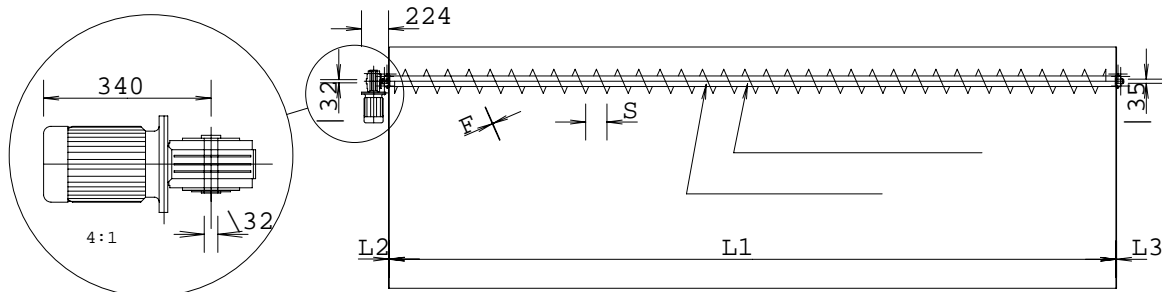
**S**..... For wearing materials

The screw shaft can also be delivered with 40 mm. spaces between bearing and container wall.

**KS**..... For heavy wearing materials

Type	Diameter	Model	Max RPM	M <sup>3</sup> /h with 40% filling and max rpm.	KW	S	F	L <sub>1</sub> - L <sub>2</sub> - L <sub>3</sub> to be informed when ordering
SC200	Ø200	L	145	14,5	1,5	175	2/4	
SC250	Ø250	L	145	33,0	1,5	225	2/4	
SC200	Ø200	S	100	9,6	1,5	175	5	
SC250	Ø250	S	100	22,5	1,5	225	5	
SC200	Ø200	KS	75	7,5	1,5	175	8	
SC250	Ø250	KS	75	17,0	1,5	225	8	

Standard worm gear: 72, 96 and 144 RPM.



Copyright © - The right to alterations is reserved.