

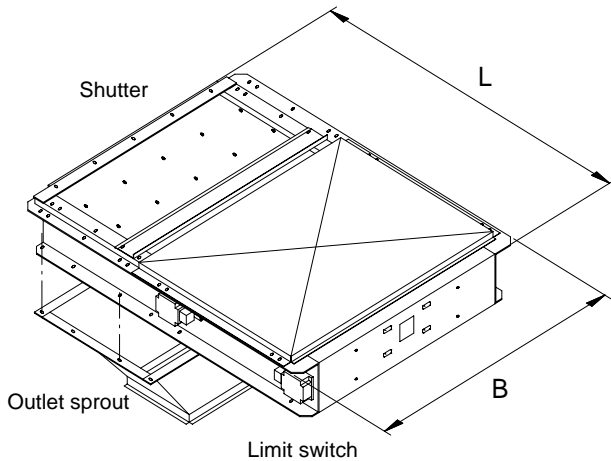
# Data Sheet 34.2

## Chain Conveyor: Shutter RL & RM



In addition to the end outlet under the drive station the chain conveyor can be supplied with a number of outlets, which can be fitted with robust Cimbria shutters. Shutters are as standard painted or galvanised with a free hanging cleaning brush, which cleans the chain as it passes the open shutter, and supplied with indication.

Shutters can only be operated, when the conveyor is running. The shutter is made of steel and the shutter plate is mounted with 10 mm PEHD.



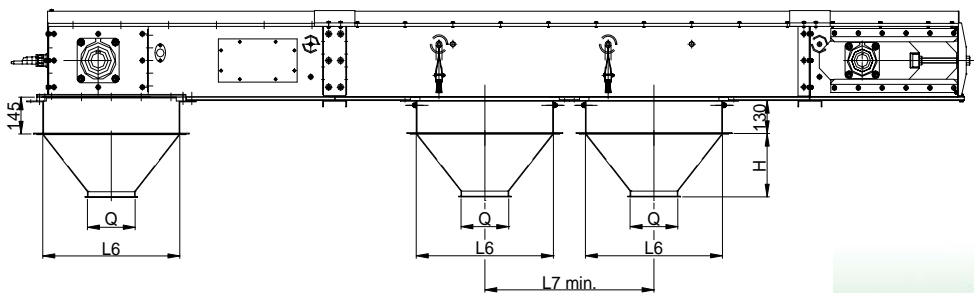
	L	B
RL3	890	708
RL5	890	708
RL7	1065	908
RL8	1065	908
RM10	1405	908
RM12	1405	908

Cimbria shutters are made in the following executions:

- Manual operated, right or left  
Alternative with limit switch
- Pneumatic, 24 V/AC, 24 V/DC and 220 V/AC  
On/Off or impulse controlled valve, IP43/67
- With spindle motor, 0.25 kW - 900 RPM.

### Shutter Placing on Chain Conveyors:

The shutters can be placed in a number of positions on the intermediate sections.



	H	L6	L7	Q
RL3	250	572	708	16/20
RL5	250	572	708	16/20
RL7	400	774	908	24/30
RL8	400	774	908	24/30
RM10	350	774	908	30
RM12	350	774	908	30



Copyright © - The right to alterations is reserved