

Data Sheet 34.2.1

Chain conveyor type RL & RM: In Line Shutter CIS



As an alternative to the 90° shutters, in-line shutters can be supplied that require less space in terms of width. In addition to the end outlet under the drive station, the chain conveyor can be equipped with any number of bottom outlets, which can be fitted with shutters.

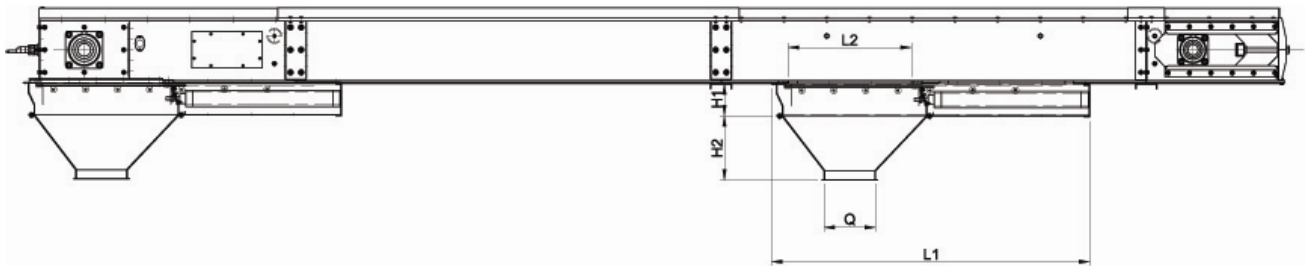
The shutters are available as standard in painted or hot-galvanised versions.

The shutter is fabricated in steel built on a 4 mm frame. The shutter plate is lined with durable 10 mm PEHD and the shutter runs on 2 x 7 bearings such that the shutter is particularly smooth-running.

Chain conveyors can be equipped with free-hanging or pneumatic cleaning brushes that clean the chain when it passes through the open shutter and which have a sensor indicating whether the shutter is open or closed.

The shutter may only be operated when the conveyor is running.

- built on a 4 mm frame
- available for all types of chain conveyors
- shutter operates electrically or pneumatically
- shutter plate supported by bearings
- needs less space beneath the conveyor
- no demands for double walkways on silos
- NOT 100% emptying



Type	L1	L2	H1	H2	Q
RL 3	1550	575	150	350	16/20
RL 5	1550	575	150	350	20/30
RL 7	1550	575	150	350	20/24/30
RL 8	1550	575	150	350	24/30
RM 10	1810	750	170	400	30/40
RM 12	1810	750	170	400	30/40

Location of shutters on the chain conveyor:

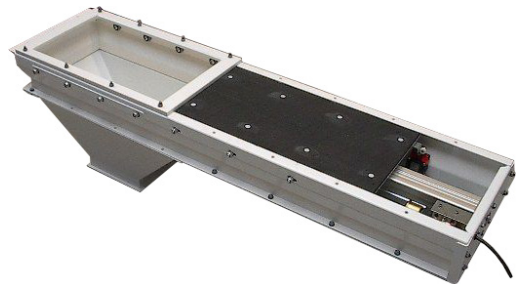
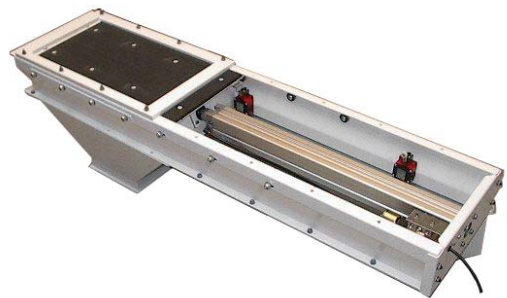
The shutters can be placed anywhere on the assembled intermediate sections.

Cimbria shutters for chain conveyors are available in the following versions:

- Pneumatic control 24 V AC/DC
- Actuator-controlled 3 x 380 V (standard with BJ-actuator)

Manually operated and rack and pinion controlled with gear motor can also be supplied.

Alternatively, the shutter can also be supplied manufactured in stainless steel.



Copyright © - Subject to alterations